

Tips for Using Public Fill Reception Facility Safely

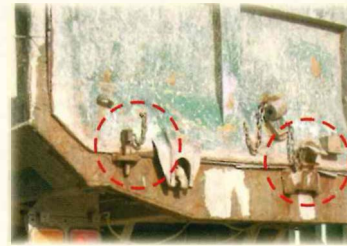
To cope with the large number of vehicles carrying construction wastes for disposal, it is necessary for the Public Fill Reception Facilities to be in smooth operation at all times. This will rely on the full cooperation from the haulers to observe and follow the instructions, arrangements and safety measures inside the facility so that the construction waste transaction can be processed efficiently.



Fill Management Division
Civil Engineering and Development Department

1. Enter the Facility

Open the hopper cover at the designated area for the waste load to be inspected by the facility officer. However, the hopper tailboard shall be kept closed to prevent the waste load from leakage on the way before disposal as the leakage will cause hazard to the others as well as nuisance to the environment.



2. Arrive at the In-weighbridge

If there has been a vehicle under weighing, please stop your vehicle behind the yellow line in front of the weighbridge in order not to interfere the in-weight of the vehicle in front.

When the vehicle in front has been weighed and departed, the following vehicle can move slowly onto the weigh-bridge and stop for weighing.



3. Weighing-in Process

Present the CHIT and DDF (if available for some public works contracts) to the weighing operator for recording of the waste source data.



If the vehicle is permitted to enter the facility for disposal of the waste load, the weighing operator will direct the driver to the assigned disposal area, such as 'Dry Material Area', 'Wet Material Area', 'Asphalt Material Area', 'Rock Crushing Area' and 'Tanker Disposal Area' etc., depending on the nature of the waste load.



If the vehicle is rejected from entering the facility for disposal of the waste load, the driver shall drive the vehicle to the out-weighbridge and leave the facility.



The rejection reasons include:

1. No valid Dumping Licence ;
2. No valid CHIT ;
3. Gross vehicle weight exceed the Permitted Gross Vehicle Weight ; or
4. Waste not complied with the acceptance criteria etc.



For any query on the weighing-in process, please drive away the vehicle from the weighbridge to a designated place where the facility officer will handle the query.

DON'T Block the Weighbridge !

Attention : Any person who causes disruption to the facility operation will be warned or even be liable to prosecution.

4. Waste Inspection

During the weighing-in process, the Computer System will randomly select the vehicle for 'Sample Inspection' or 'Full Inspection on Waste Load'.



The selected vehicle shall follow the facility officer to a designated area for waste inspection. The driver should stay on the spot witnessing the inspection and waiting for the result.



5. Go to the Disposal Area

For the vehicle permitted for disposal of the waste load at the facility, the driver shall drive in safe speed on the way to the assigned disposal area, and shall also observe and follow the traffic signs along the haul road.



For the haul road being wet on the rainy day, the driver shall allow an additional safe gap between his vehicle and the one in front.

Upon arrival at the disposal area, please observe the instructions given by the facility officer and watch out for other vehicles in operation nearby. For the sake of safety, the driver shall unbolt the hopper tailboard at the specified place if necessary.

6. Discharge the Waste Load

Please check to ensure no obstruction at the rear before reversing the vehicle and raising the hopper, and also keep a safe distance from the vehicles nearby.



At the fill bank, please ensure the vehicle not exceeding the soil bund erected in front of the tipping platform edge as a warning strip during reversing so that the vehicle would not run into some soft areas near the platform edge.



After dumping the waste load, please remember lowering the hopper completely before driving away. If the hopper needs holding-up for a while to clear the waste residue, please do it at the specified area.

Holding up or Lowering the hopper at the haul road is prohibited as it will endanger the passing vehicles !

7. Go to the Out-weighbridge

On the way to the out-weighbridge, please drive in safe speed also.

When there has been a vehicle under weighing at the out-weighbridge, please stop the vehicle behind the yellow line in front of the weighbridge in order not to interfere the out-weigh of the one in front.

When the vehicle in front has been weighed and departed, the following vehicle can move slowing onto the weighbridge and stop for weighing.



8. Weighing-out Process

During the weighing-out process, the display panel at the weighbridge will show the "Charged Load" and a Transaction Record Slip will be issued to the driver. After completion of the weighing-out process, the vehicle can depart the facility.



9. Leave the Facility

There are wheel washing facilities on the way out. The vehicles shall pass slowly the wheel washing facilities in order to have their wheels cleaned so as to avoid any residual dust or soil carried to the public roads causing nuisance to the municipal environment.



**Use the Facility Safely
Drive Happily**

Contact Telephone No.:

Tseung Kwan O Area 137 Fill Bank	2623 9267
Tuen Mun Area 38 Fill Bank	2404 9008
Chai Wan Public Fill Barging Point	2562 8787
Mui Wo Temporary Public Fill Reception Facility	2984 1221

CEDD's Website : <http://www.cedd.gov.hk>